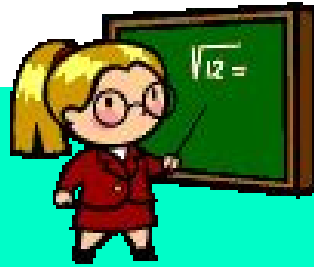


# WELCOME TO 6TH GRADE MATH WITH MRS. GALANTE!



September 7th, 2017

# MATH RULES! (AND PROCEDURES)

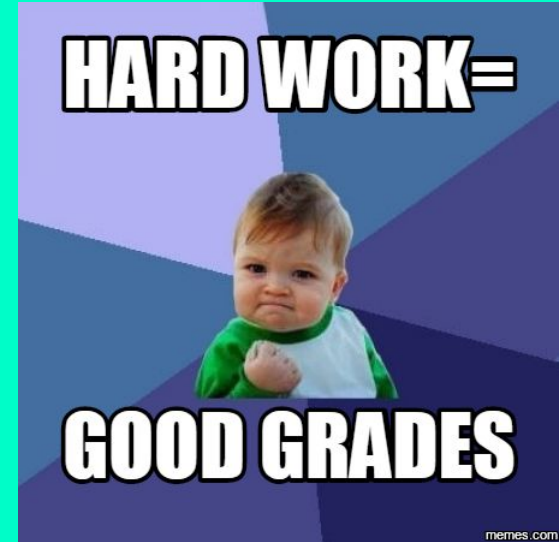
- ❖ Enter the room, check computer sign, plug in your computer (if necessary), and sit down at your desk
- ❖ Copy down homework in assignment pad
- ❖ Complete Do Now
- ❖ Go over warm-up problem(s)
- ❖ Check over homework and answer questions
- ❖ Lesson and guided practice
- ❖ Group or individual practice/activity
- ❖ Exit Ticket and Summary
- ❖ Dismissed by group

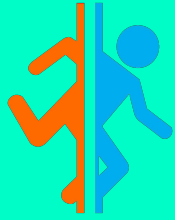




# GRADE PERCENTAGES

- ❖ Tests = 40%
- ❖ Quizzes = 30%
- ❖ Formative Assessments = 20%
- ❖ Classwork = 10%





# PARENT PORTAL

- ❖ Link to portal provided on Markham Place School's website under *Genesis Parent Portal*
- ❖ Math grades updated frequently :)
- ❖ Look for comments!



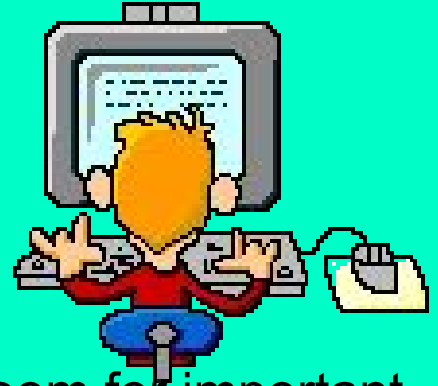
# BE PREPARED!



- ❖ You must come to class with your assignment pad, binder, textbook, required assignments, and several pencils everyday!
- ❖ Pens and markers may only be used to correct problems and write down homework
- ❖ Pensive Pencil Project
- ❖ 3 Strikes = Detention



# SCHOOL WEBSITE

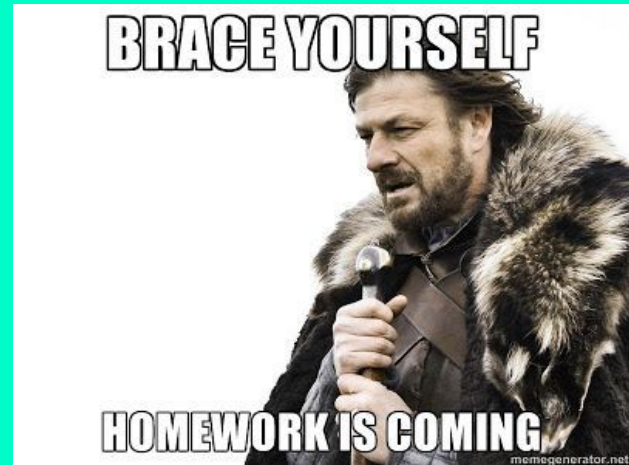


- ❖ Copies of notes and homework assignments will become available by 3:30 PM.
- ❖ Check Mrs. Galante's website and Google classroom for important announcements, possible homework adjustments, and links to helpful websites!
- ❖ *It is your responsibility to print out materials and bring them to school when required.*
- ❖ Check your school Gmail and Google classroom accounts at home!



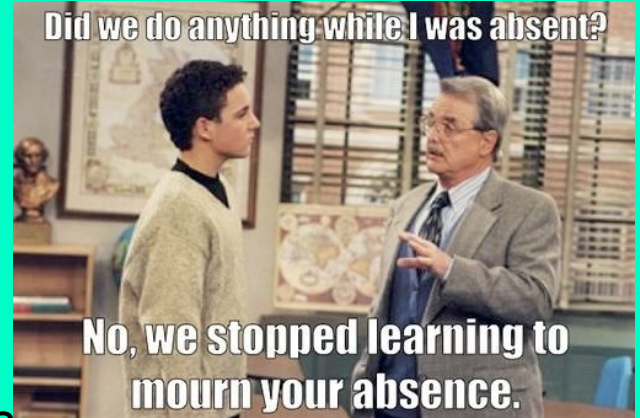
# MATH HOMEWORK POLICY

- ❖ One missed homework assignment =
  - "No" for completion in gradebook
  - After-school detention where assignment must be completed
  - Failure to attend or discuss detention with the teacher results in a Central detention
  
- ❖ 2 missed homework assignments =
  - All consequences for missed assignment
  - Parents are contacted
  
- ❖ Every missed homework assignment after the 2<sup>nd</sup> =
  - All consequences for missed assignment
  - Parents are contacted
  - Central detention



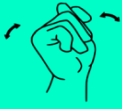
# ABSENT POLICY

- ❖ Get notes and assignments from Missing Work bulletin board
- ❖ Number of days absent = Number of school days to make up missed assignments
- ❖ It is your responsibility to look over the notes and learn the material. Talk to Mrs. Galante about meeting if you don't understand the material.
- ❖ *If you miss class but are present at school, it is your responsibility to obtain any missing work that school day!*
- ❖ If you have questions, ASK!





bathroom



# BATHROOM AND WATER FOUNTAIN



- ❖ Must use signals
- ❖ Must sign-out and sign back in
- ❖ *Please try to go during the very beginning of the period or after our guided notes together so you don't miss out on the lesson itself!*
- ❖ Only one girl and one boy allowed at a time
- ❖ Only water is allowed during class – *must keep water bottle on the floor!*

# EXTRA HELP

- ❖ Mrs. Galante is available after school on Tuesday, Wednesday, and Thursday until 3:30PM unless she has a meeting.
- ❖ Please ask for extra help in advance (if you can) to secure a day and time for Mrs. G to meet with you!



# MATH BINDERS AND LOGINS

## ❖ Four Sections

- Notes
- Classwork (CW)
- Homework (HW)
- Miscellaneous (Misc)



- ❖ When you're finished with your binder, log onto Google classroom for further login instructions!