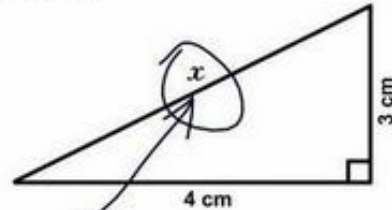


WELCOME TO PRE-ALGEBRA WITH MRS. GALANTE!

3. Find x .



Here it is

September 7th, 2017

MATH RULES! (AND PROCEDURES)

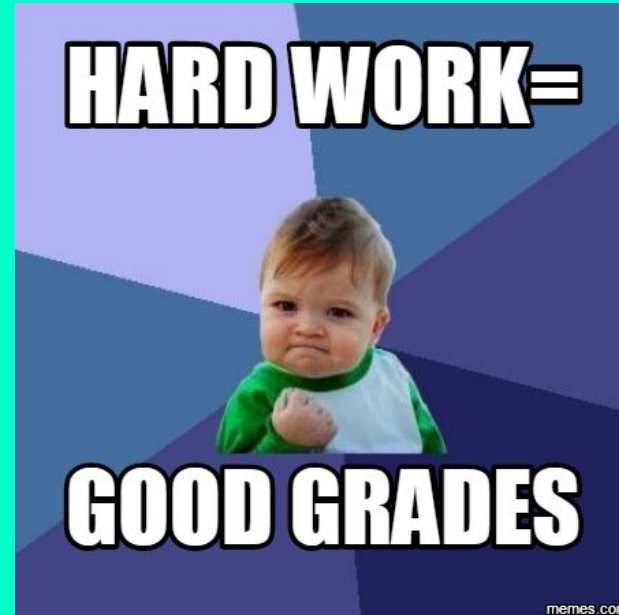
- ❖ Enter the room, check computer sign, plug in your computer (if necessary), and sit down at your desk
- ❖ Copy down homework in assignment pad
- ❖ Complete Do Now
- ❖ Go over warm-up problem(s)
- ❖ Check over homework and answer questions
- ❖ Lesson and guided practice
- ❖ Group or individual practice/activity
- ❖ Exit Ticket and Summary
- ❖ Dismissed by group

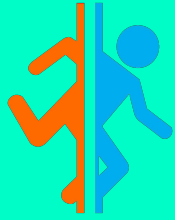




GRADE PERCENTAGES

- ❖ Tests = 50%
- ❖ Quizzes = 30%
- ❖ Formative Assessments = 15%
- ❖ Classwork = 5%





PARENT PORTAL

- ❖ Link to portal provided on Markham Place School's website under *Genesis Parent Portal*
- ❖ Math grades updated frequently
- ❖ Look for comments!



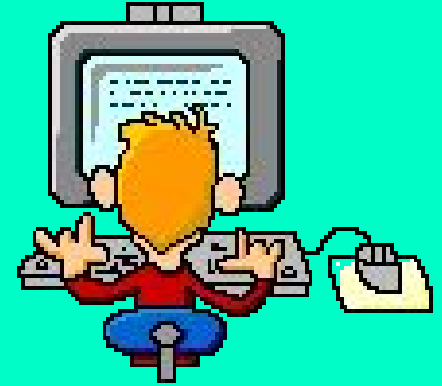
BE PREPARED!



- ❖ You must come to class with your assignment pad, math materials, required assignments, and several pencils everyday!
- ❖ Pens and markers may only be used to correct problems and write down homework
- ❖ Pensive Pencil Project
- ❖ 3 Strikes = Detention



SCHOOL WEBSITE



- ❖ Copies of notes and homework assignments will become available by 3:30 PM.
- ❖ Check my website and Google classroom for important announcements, possible homework adjustments, and links to helpful websites!
- ❖ *It is your responsibility to print out materials and bring them to school when required.*
- ❖ Check your school Gmail and Google classroom accounts at home!

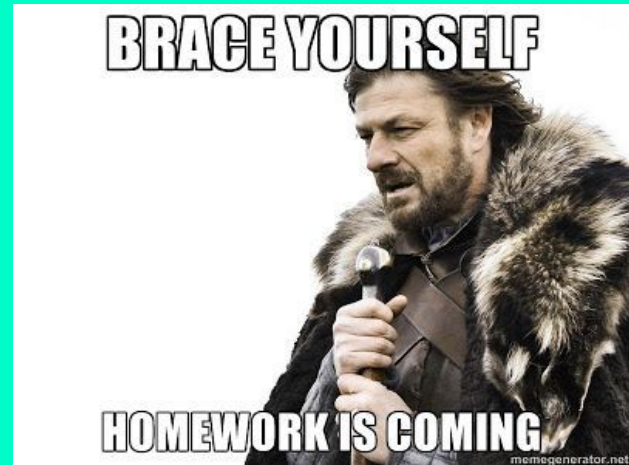


GALANTE MATH HOMEWORK POLICY

- ❖ One missed homework assignment =
 - "No" for completion in gradebook
 - After-school detention where assignment must be completed
 - Failure to attend or discuss detention with the teacher results in a Central detention

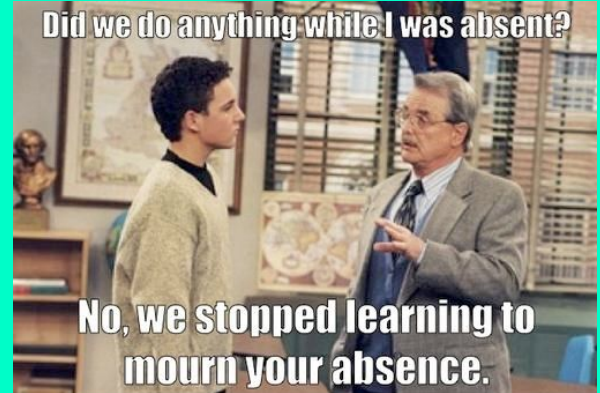
- ❖ 2 missed homework assignments =
 - All consequences for missed assignment
 - Parents are contacted

- ❖ Every missed homework assignment after the 2nd =
 - All consequences for missed assignment
 - Parents are contacted
 - Central detention



ABSENT POLICY

- ❖ Get notes and assignments from Missing Work bulletin board
- ❖ Number of days absent = Number of school days to make up missed assignments
- ❖ It is your responsibility to look over the notes and learn the material. Talk to Mrs. Galante about meeting if you don't understand the material.
- ❖ *If you miss class but are present at school, it is your responsibility to obtain any missing work that school day!*
- ❖ If you have questions, ASK!



bathroom



BATHROOM AND WATER FOUNTAIN



- ❖ Must use signals
- ❖ Must sign-out and sign back in
- ❖ *Please try to go during the very beginning of the period or after our guided notes together so you don't miss out on the lesson itself!*
- ❖ Only one girl and one boy allowed at a time
- ❖ Only water is allowed during class – *must keep water bottle on the floor!*

EXTRA HELP

- ❖ I am available after school on Tuesday, Wednesday, and Thursday until 3:30PM unless I have a meeting.
- ❖ Please ask for extra help in advance to secure a day and time for Mrs. G to meet with you!



MATH BINDERS AND LOGINS

❖ Four Sections

- Notes
- Classwork (CW)
- Homework (HW)
- Miscellaneous (Misc)



- ❖ *Don't have a binder?* Please bring a 1-inch binder with 4 dividers and some filler paper to class by Tuesday, September 12th.
- ❖ When you're finished with your binder, log onto Google classroom for further login instructions!